

LARGE CAN TYPE

HL Series

Snap-in Terminal Type,
Wide Temperature Range



- Withstanding 5000 hours application of high ripple current at 105°C.

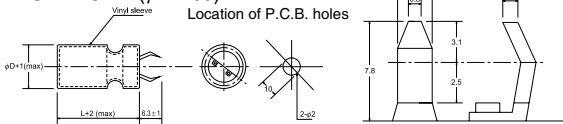


SPECIFICATION

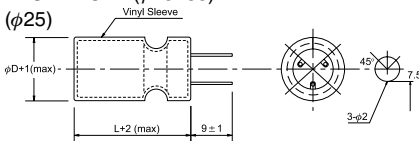
Item	Characteristic				
Operation Temperature Range	-40 ~ +105°C				
Rated Working Voltage	200 ~ 450VDC				
Capacitance Tolerance (120Hz 20°C)	±20%(M)				
Leakage Current (20°C)	$I \leq 0.02CV$ or 3 (mA) *Whichever is smaller after 5 minutes I : Leakage Current(μA) C : Rated Capacitance(μF) V : Working Voltage(V)				
Surge Voltage (20°C)	W.V.	200	250	400	450
	S.V.	250	300	450	500
Dissipation Factor (tan δ) (120Hz 20°C)	Rated Voltage (V)	200	250	400	450
	tan δ	0.15	0.15	0.15	0.15
Low Temperature Stability	Impedance ratio at 120Hz				
	Rated Voltage (V)	200~250		400~450	
	-25°C / +20°C	4		6	
Load Life	After 5000 hours application of W.V. and +105°C ripple current value, the capacitor shall meet the following limits. (DC + ripple peak voltage ≤ rate working voltage)				
	Capacitance Change	≤ ±20% of initial value			
	Dissipation Factor	≤ 175% of initial specified value			
	Leakage current	≤ initial specified value			
Shelf Life	At +105°C, no voltage application after 1000 hours, the capacitor shall meet the limits for load life characteristics. (With voltage treatment)				

TERMINAL TYPE

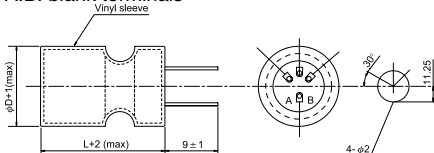
▲ P.C.B. TERMINAL (SNAP IN)
SYMBOL:W(φ22~35)



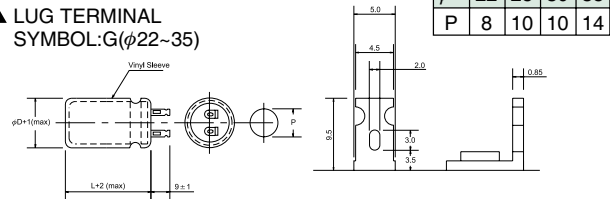
▲ P.C.B. TERMINAL
SYMBOL:V(φ25~35)



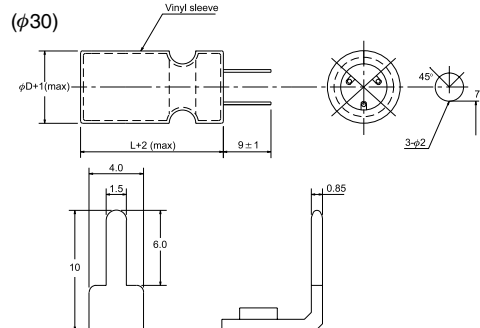
(φ35)
A.B. blank terminals



▲ LUG TERMINAL
SYMBOL:G(φ22~35)



φD	22	25	30	35
P	8	10	10	14



RIPPLE CURRENT COEFFICIENTS

Temperature(°C)	40	60	70	85	105
Multiplier	2.50	2.20	2.00	1.80	1.00

Frequency(Hz)	60	120	400	1k	10k
W.V.	Multiplier				
≥200V	0.80	1.00	1.10	1.30	1.40



7170 N. Ridgeway
Lincolnwood, IL 60712
Ph: 847-675-1865
Fax: 847-675-3345
Email: sales@icd-sales.com
Website: www.icd-sales.com



● CASE SIZE & MAX RIPPLE CURRENT

Case size : D x L (mm)
Max ripple current : A(rms) 105°C 120Hz

μF	V(Code) Code φD	200 (2D)				250 (2E)									
		22	25	30	35	22	25	30	35						
150	151						25								
							0.69								
180	181						25	30		25					
							0.76	0.82		0.82					
220	221		25				30	35		30					
			0.85				0.91	0.97		0.98					
270	271		30		25		30	35	25	30					
			1.02		1.02		1.01	1.07	1.01	1.08					
330	331	30	35	25	30		35	40	30	35		25			
		1.12	1.20	1.12	1.21		1.19	1.26	1.20	1.28		1.24			
390	391	35	35	30	35		25				30	35			
		1.31	1.31	1.32	1.40		1.37				1.45	1.54			
470	471	40	45	30	35	25	30				40	45	30	35	25
		1.52	1.60	1.45	1.54	1.50	1.61		50		1.61	1.70	1.59	1.69	1.63
560	561	45	50	35	40	30	35				45		35	40	30
		1.75	1.83	1.68	1.78	1.76	1.87				1.85		1.85	1.95	1.91
680	681			40	50	30	35				50		40	45	30
				1.96	2.16	1.94	2.06				1.94		2.15	2.26	2.10
820	821			45		35	40						45	50	35
				2.27		2.26	2.39						2.49	2.60	2.45
1000	102					40	45	35	35				55		40
						2.64	2.78	2.74	2.74				3.00		2.86
1200	122					45	50	40	45					50	55
						3.04	3.19	3.17	3.33					3.44	3.58
1500	152							45	50					55	
								3.72	3.75					4.00	
1800	182								50						L(mm)
									4.10						R.C.

μF	V(Code) Code φD	400 (2G)				450 (2W)										
		22	25	30	35	22	25	30	35							
47	470								25							
									0.39							
56	560								25	30						
									0.42	0.46						
68	680		25						30	35	25					
			0.47						0.50	0.54	0.50					
82	820	25	30						30	35	25	30				
		0.52	0.56						0.55	0.59	0.55	0.60				
100	101	30	35	25	30				35	40	30	35		25		
		0.62	0.66	0.62	0.66				0.65	0.69	0.66	0.70		0.68		
120	121	35	40	30	35		25		40	50	35	40	25	30	25	
		0.72	0.76	0.73	0.77		0.75		0.76	0.84	0.77	0.81	0.75	0.80	0.82	
150	151	40	45	30	40	25	30		50		40	45	30	35	30	
		0.85	0.90	0.81	0.92	0.84	0.90		0.94		0.91	0.96	0.90	0.96	0.99	
180	181	45	50	35	40	30	35		25		45		35	40	30	
		0.98	1.03	0.95	1.06	0.99	1.06		1.01		1.05		1.05	1.11	1.08	
220	221	50		40	50	30	35		30				40	45	30	35
		1.14		1.11	1.22	1.09	1.16		1.20				1.22	1.29	1.19	1.27
270	271			45		35	45	30	35				45	50	35	40
				1.29		1.29	1.43	1.33	1.41				1.43	1.49	1.41	1.48
330	331					40	50	35	40				50		40	45
						1.51	1.66	1.56	1.65				1.65		1.64	1.72
390	391					45		35	45						45	
						1.72		1.70	1.88						1.87	
470	471							40	50							
								1.97	2.16							
560	561							45								L(mm)
									2.26							R.C.



7170 N. Ridgeway
Lincolnwood, IL 60712
Ph: 847-675-1865
Fax: 847-675-3345
Email: sales@icd-sales.com
Website: www.icd-sales.com